



SDG

SERVICE SCHEDULES

ENGINEERS INFORMATION

Automatic Swing Doors

Check Fixings on the following:

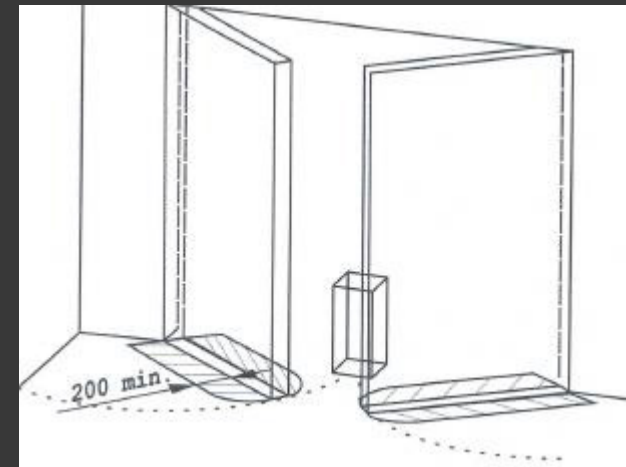
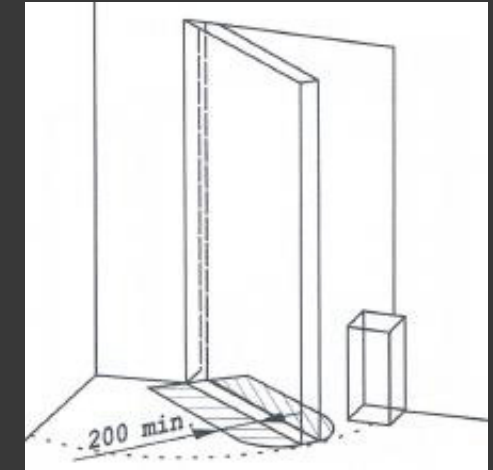
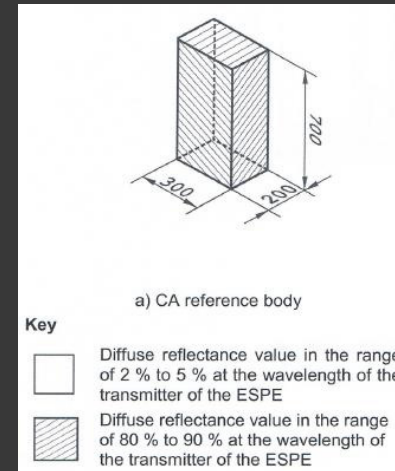
- Operator Fixings
- Drive Arm
- Top/Bottom Pivots
- Safety Barrier Fixings
- Finger Guards
- Locks
- Safety Sensor

Check for Damage on the following:

- Operator
- Drive Arm
- Top/Bottom Pivot
- Safety Barrier
- Safety Sensors
- Finger Guards
- Locks

Check correct operation & adjust on:

- Open and Close position
- Safety Devices to BSEN 16005 using test body CA
- Activation Devices to BSEN 16005
- Operating Speeds to BSEN 16005
- Manual Operation



Sliding and Bi-Part Automatic Doors

Check Fixings on the following:

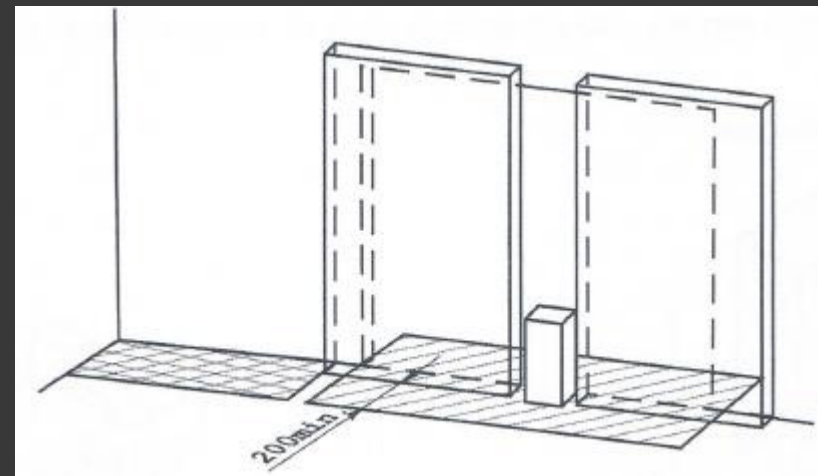
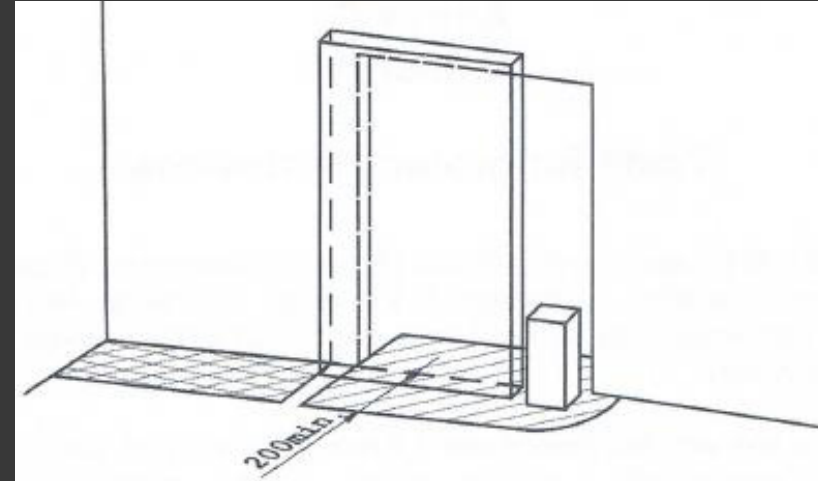
- Carrier Track
- Top of Door Track
- Floor Guides
- Locking Mechanism
- In-Header Components
- Carrier Wheels
- Floor Guide Track
- Pocket Screens
- Canopy

Check for Damage on the following:

- Door Leafs
- Carrier Wheels
- Top of Door Track
- Floor Guide Tracks
- Floor Guides
- Pocket Screens
- Canopy
- Locking Mechanism
- Safety Devices

Check correct operation & adjust on:

- Open and Close position
- Safety Devices to BSEN 16005 using test body CA
- Activation Devices to BSEN 16005
- Operating Speeds to BSEN 16005
- Manual Operation

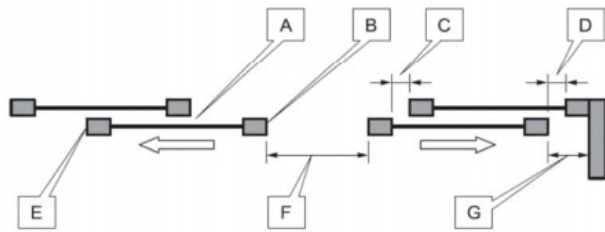


Automatic Door Risk Assessment

Risk assessment check sheet for power operated sliding doors

When a large proportion of the users are elderly, infirm, disabled persons and young children, any contact with the user is to be considered unacceptable (High Risk).

Risk category – High Risk category – Low



Tick Chosen protective measures.

Location	Hazard	Protective measure chosen						
		Guards (pocket screen)	Barriers	Limitation of leaf forces	ESPE PSPE	Safety distances	Low energy movement	Signage
A	Drawing in							
B	Impact							
C	Shearing							
D	Shearing							
E	Impact							
F	Crushing							
G	Crushing							

NOTE: Highlighted boxes above denote protective options for high risk categories. Location B & F, ESPE only.

- Safety glass installed
- Activation distances suitable
- Emergency escape door Failsafe system installed Breakout system installed

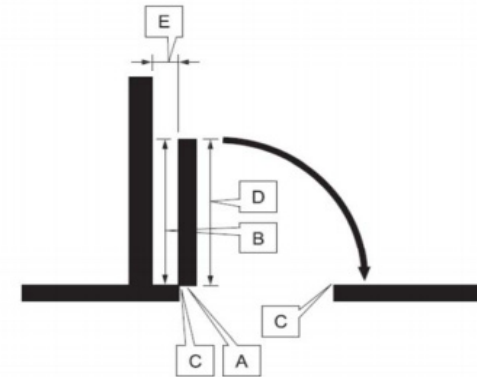
Comments:

Door location..... Name of assessor.....Date.....

Risk assessment check sheet for power operated swing doors

When a large proportion of the users are elderly, infirm, disabled persons and young children, any contact with the user is to be considered unacceptable (High Risk).

Risk category – High Risk category – Low



Tick Chosen protective measures.

Location	Hazard	Protective measure chosen						
		Guards or hinge design	Barriers	Limitation of leaf forces	ESPE PSPE	Safety distances	Low energy movement	Signage
A	Drawing in							
B	Impact							
C	Shearing							
D	Impact							
E	Crushing							

NOTE: Highlighted boxes above denote protective options for high risk categories. Location B, C & D, ESPE only.

- Safety glass installed
- Activation distances suitable
- Emergency escape door Failsafe system installed Breakout system installed

Comments:

Door location..... Name of assessor.....Date.....